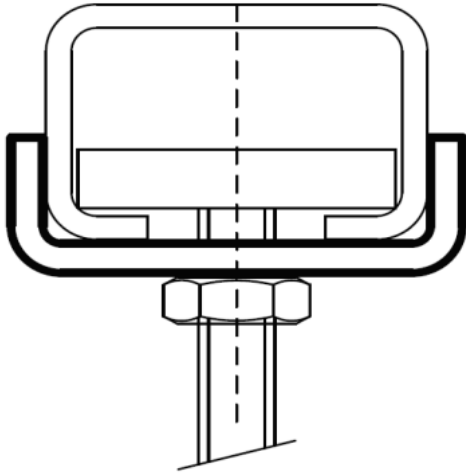




C WASHER



FEATURES AND BENEFITS.

Description:-	<ul style="list-style-type: none"> * Wall plate with welded C-profile. * Perfectly suitable for hanging to the ceiling * Slots at 90° to each other to simplify fixing Strut Rail. * CO2 welded * A continuous graduated centimetre scale on one side * Suitable for in- and outdoor applications. * Stands min. 1.000 hours salt spray test (max. 5% red rust) according to ISO 9227
Material:-	Steel, other materials on request
Special:-	* Electro galvanized as per ASTM B 633

Product Code	Channel Size	Slot Size mm	(S) mm	Length (L) mm	(H) mm	Max Load				Microns (μ)	Box Quantity
						F1 (N)	F2 (N)	F3 (N)	F4 (N)		
HGEPCA41/150	41 x 41	13 X 25	90	150	130	6100	3000	3000	2000	8 - 15	20
HGEPCA41/300	41 x 41	13 X 25	90	300	130	3000	1500	1500	1000	8 - 15	20
HGEPCA41/450	41 x 41	13 X 25	90	450	130	2000	1000	1000	650	8 - 15	5
HGEPCA41/600	41 x 41	13 X 25	90	600	130	1500	750	750	500	8 - 15	2
HGEPCA41/750	41 x 41	13 X 25	90	750	130	1250	600	600	400	8 - 15	1
HGEPCA21/150	21 X 21	13 X 25	70	150	110	2000	1000	1000	650	8 - 15	20
HGEPCA21/300	21 X 21	13 X 25	70	300	110	1000	500	500	330	8 - 15	20
HGEPCA21/450	21 X 21	13 X 25	70	450	110	670	330	330	220	8 - 15	5

NOTE:- 1. CUSTOMIZED DIMENSIONS AVAILABLE ON REQUEST.

