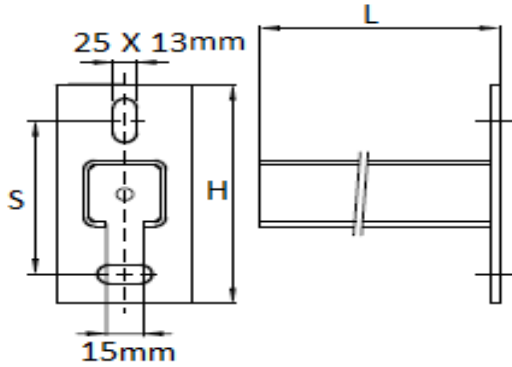




## CANTILEVER ARM



### FEATURES AND BENEFITS.

<b>Description:-</b>	<ul style="list-style-type: none"> <li>* Wall plate with welded C-profile.</li> <li>* Perfectly suitable for hanging to the ceiling.</li> <li>* Slots at 90° to each other to simplify fixing Strut Rail</li> <li>* CO2 welded.</li> <li>* A continuous graduated centimetre scale on one side.</li> <li>* Suitable for in- and outdoor applications.</li> <li>* Stands min. 1.000 hours salt spray test (max. 5% red rust) according to ISO 9227.</li> </ul>
<b>Material:-</b>	Steel, other materials on request.
<b>Special:-</b>	<ul style="list-style-type: none"> <li>* Electro galvanized as per ASTM B 633</li> <li>* Electro galvanized as per ASTM A 123 / A 123M.</li> </ul>

Product Code	Channel Size	Slot Size mm	(S) mm	Length (L) mm	(H) mm	Max Load				Box Quantity
						F1 (N)	F2 (N)	F3 (N)	F4 (N)	
HGEPCA41/150	41 x 41	13 X 25	90	150	130	6100	3000	3000	2000	20
HGEPCA41/300	41 x 41	13 X 25	90	300	130	3000	1500	1500	1000	20
HGEPCA41/450	41 x 41	13 X 25	90	450	130	2000	1000	1000	650	5
HGEPCA41/600	41 x 41	13 X 25	90	600	130	1500	750	750	500	2
HGEPCA41/750	41 x 41	13 X 25	90	750	130	1250	600	600	400	1
HGEPCA21/150	21 X 21	13 X 25	70	150	110	2000	1000	1000	650	20
HGEPCA21/300	21 X 21	13 X 25	70	300	110	1000	500	500	330	20
HGEPCA21/450	21 X 21	13 X 25	70	450	110	670	330	330	220	5

**NOTE:-** 1. OTHER DIMENSIONS AVAILABLE ON REQUEST.

2. a. EP - MICRONS : 8μ - 15μ

b. HDG - MICRONS : 70μ - 95μ

