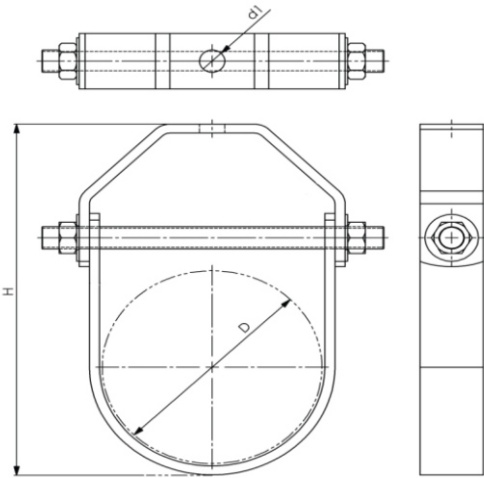




CLEVIS HANGER



FEATURES AND BENEFITS.

Description:-	<ul style="list-style-type: none"> * Designed for chilled water pipe work and fire fighting systems. * Design permits vertical adjustment of pipe after installation. * Hanger load nut above clevis must be tightened securely to ensure proper hanger performance.
Material:-	Steel, other materials on request.
Special:-	<ul style="list-style-type: none"> * Electro galvanized as per ASTM B 633. * Galvanized as per ASTM A 123/ A123M. * Designed to meet MSS standard SP-58, type 1 and SP-69.

Product Code	Nominal Pipe Size In.	Pipe OD (D) mm	Height (H) mm	Top Hole Dia (d1) mm	Hanger Rod Size (mm)	Cross Bolt Dia. (CRD)	Max Load (N)	Box Quantity	
HGEPCH022	½"	DN15	21.3	80.0	11	M10	M8	4000	300
HGEPCH027	¾"	DN20	26.7	85.0	11	M10	M8	4000	300
HGEPCH034	1"	DN25	33.4	99.0	11	M10	M8	4000	250
HGEPCH042	1 ¼"	DN32	42.1	107.0	11	M10	M8	4000	150
HGEPCH048	1 ½"	DN40	48.2	109.0	11	M10	M8	4000	150
HGEPCH060	2"	DN50	60.3	128.0	11	M10	M8	4000	100
HGEPCH073	2 ½"	DN65	73	158.0	13	M12	M10	6500	60
HGEPCH090	3"	DN80	88.9	171.0	13	M12	M10	6500	40
HGEPCH101	3 ½"	DN90	101.6	179.0	13	M12	M10	6500	30
HGEPCH114	4"	DN100	114.3	204.0	13	M12	M10	8000	25
HGEPCH141	5"	DN125	141.3	235.0	17	M16	M12	8000	15
HGEPCH168	6"	DN150	168.3	265.0	17	M16	M12	11000	12
HGEPCH219	8"	DN200	219.1	333.0	17	M16	M12	11000	6
HGEPCH273	10"	DN250	273.1	390.0	21	M20	M16	15000	5
HGEPCH323	12"	DN300	323.8	465.0	21	M20	M16	15000	5
HGEPCH355	14"	DN350	355.6	525.0	21	M20	M20	17500	3
HGEPCH406	16"	DN400	406.4	575.0	25	M24	M24	17500	2
HGEPCH457	18"	DN450	457.2	650.0	25	M24	M24	17500	2
HGEPCH508	20"	DN500	508	705.0	32	M30	M24	22000	1
HGEPCH610	24"	DN600	609.6	815.0	32	M30	M24	27000	1
HGEPCH762	30"	DN750	762	1000.0	32	M30	M24	30000	1

- NOTE:-**
1. THE CROSS BOLT AND HANGER ROD SIZE CAN BE CHANGED UPON REQUEST.
 2. THE SIZES OF CLEVIS HANGER ABOVE 8" WILL BE PROVIDED IN HDPE BAGS.
 3. a. EP - MICRONS : 8μ - 15μ
b. HDG - MICRONS : 70μ - 95μ

