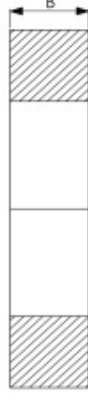
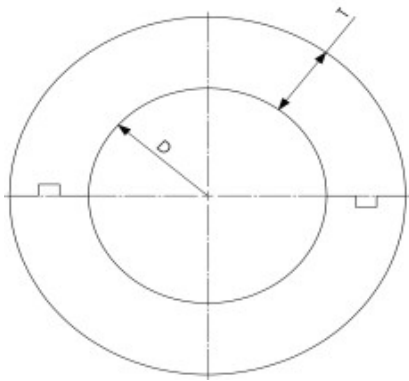




RUBBER SUPPORT INSERTS FOR GI PIPES



FEATURES AND BENEFITS.

Description:-	<ul style="list-style-type: none"> * Used at the supporting points of insulated pipes to prevent crushing of insulation. * Very high load bearing capacity. * Dimensionally accurate as piece is moulded. * Excellent resistance to deterioration/ distortion.
Special:-	<ul style="list-style-type: none"> * Density:- 1100 - 1600 kg/m³ * Thermal Conductivity :- 0.16 w/m Temperature * Resistance from -20 °C to + 110 °C * Designed to meet BS3974-1 : 1974

Standard B Dimension

Upto 2"	:- 25 mm
2 1/2" to 5"	:- 38 mm
6" and Above	:- 50 mm

Sr. No.	Nominal Pipe Size		Pipe OD (D) mm	(T) 13MM	(T) 19mm	(T) 25mm	(T) 32mm	(T) 38mm	(T) 50mm	(T) 65mm	(T) 75mm
	In.	mm									
1	½"	DN15	21.3	FG13RSI022	FG19RSI022	FG25RSI022	FG32RSI022	FG38RSI022	FG50RSI022	FG65RSI022	FG75RSI022
2	¾"	DN20	26.7	FG13RSI028	FG19RSI028	FG25RSI028	FG32RSI028	FG38RSI028	FG50RSI028	FG65RSI028	FG75RSI028
3	1"	DN25	33.4	FG13RSI034	FG19RSI034	FG25RSI034	FG32RSI034	FG38RSI034	FG50RSI034	FG65RSI034	FG75RSI034
4	1 ¼"	DN32	42.1	FG13RSI042	FG19RSI042	FG25RSI042	FG32RSI042	FG38RSI042	FG50RSI042	FG65RSI042	FG75RSI042
5	1 ½"	DN40	48.2	FG13RSI048	FG19RSI048	FG25RSI048	FG32RSI048	FG38RSI048	FG50RSI048	FG65RSI048	FG75RSI048
6	2"	DN50	60.3	FG13RSI060	FG19RSI060	FG25RSI060	FG32RSI060	FG38RSI060	FG50RSI060	FG65RSI060	FG75RSI060
7	2 ½"	DN65	73	FG13RSI073	FG19RSI073	FG25RSI073	FG32RSI073	FG38RSI073	FG50RSI073	FG65RSI073	FG75RSI073
8	3"	DN80	88.9	FG13RSI090	FG19RSI090	FG25RSI090	FG32RSI090	FG38RSI090	FG50RSI090	FG65RSI090	FG75RSI090
9	3 1/2"	DN90	101.6	FG13RSI102	FG19RSI102	FG25RSI102	FG32RSI102	FG38RSI102	FG50RSI102	FG65RSI102	FG75RSI102
10	4"	DN100	114.3	FG13RSI114	FG19RSI114	FG25RSI114	FG32RSI114	FG38RSI114	FG50RSI114	FG65RSI114	FG75RSI114
11	5"	DN125	141.3	FG13RSI141	FG19RSI141	FG25RSI141	FG32RSI141	FG38RSI141	FG50RSI141	FG65RSI141	FG75RSI141
12	6"	DN150	168.3	FG13RSI168	FG19RSI168	FG25RSI168	FG32RSI168	FG38RSI168	FG50RSI168	FG65RSI168	FG75RSI168
13	8"	DN200	219.1	FG13RSI219	FG19RSI219	FG25RSI219	FG32RSI219	FG38RSI219	FG50RSI219	FG65RSI219	FG75RSI219
14	10"	DN250	273.1	FG13RSI273	FG19RSI273	FG25RSI273	FG32RSI273	FG38RSI273	FG50RSI273	FG65RSI273	FG75RSI273
15	12"	DN300	323.8	FG13RSI323	FG19RSI323	FG25RSI323	FG32RSI323	FG38RSI323	FG50RSI323	FG65RSI323	FG75RSI323
16	14"	DN350	355.6	FG13RSI356	FG19RSI356	FG25RSI356	FG32RSI356	FG38RSI356	FG50RSI356	FG65RSI356	FG75RSI356
17	16"	DN400	406.4	FG13RSI406	FG19RSI406	FG25RSI406	FG32RSI406	FG38RSI406	FG50RSI406	FG65RSI406	FG75RSI406
18	18"	DN450	457.2	FG13RSI457	FG19RSI457	FG25RSI457	FG32RSI457	FG38RSI457	FG50RSI457	FG65RSI457	FG75RSI457
19	20"	DN500	508	FG13RSI508	FG19RSI508	FG25RSI508	FG32RSI508	FG38RSI508	FG50RSI508	FG65RSI508	FG75RSI508
20	24"	DN600	609.6	FG13RSI610	FG19RSI610	FG25RSI610	FG32RSI610	FG38RSI610	FG50RSI610	FG65RSI610	FG75RSI610

NOTE:- 1. NON STANDARD WIDTH ARE ALSO AVAILABLE, THE SIZES LISTED ABOVE ARE OUR STANDARD SIZES, WE ALSO MAKE CUSTOM SIZES.

2. WE ALSO MAKE ALL CLAMPS TO FIT ABOVE RSI, LIKE CLEVIS HANGER, SPRINKLER HANGER, U STRAP, U BOLTS, NUT CLAMPS & ETC.

