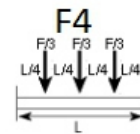
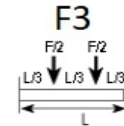
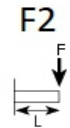
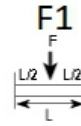
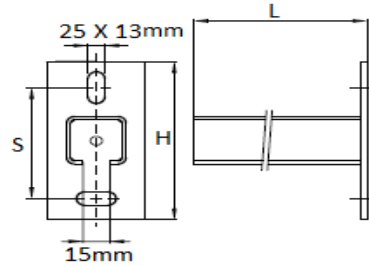
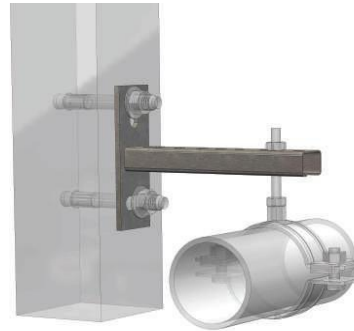


CANTILEVER ARM (HDG)

FEATURE AND BENEFITS

- *Wall plate with welded C-profile
- *Perfectly suitable for hanging to the ceiling
- *Slots at 90° to each other to simplify fixing Strut Rail
- *CO2 welded
- *A continuous graduated centimetre scale on one side
- *Suitable for in-and out door applications
- *Stands min.1.000 hours salt spray test (max.5% redrust) according to ISO 9227
- *Material:- Steel, other materials on request
- *Electrogalvanized as per ASTM A 123/ A123M.



Product Code	Channel Size	Slot Size mm	(S) mm	Length (L) mm	(H) mm	Max Load				Microns (μ)	Box Quantity
						F1 (N)	F2 (N)	F3 (N)	F4 (N)		
HGHGCA41/150	41 x 41	13 X 25	90	150	130	6100	3000	3000	2000	70 - 95	20
HGHGCA41/300	41 x 41	13 X 25	90	300	130	3000	1500	1500	1000	70 - 95	20
HGHGCA41/450	41 x 41	13 X 25	90	450	130	2000	1000	1000	650	70 - 95	5
HGHGCA41/600	41 x 41	13 X 25	90	600	130	1500	750	750	500	70 - 95	2
HGHGCA41/750	41 x 41	13 X 25	90	750	130	1250	600	600	400	70 - 95	1
HGHGCA21/150	21 X 21	13 X 25	70	150	110	2000	1000	1000	650	70 - 95	20
HGHGCA21/300	21 X 21	13 X 25	70	300	110	1000	500	500	330	70 - 95	20
HGHGCA21/450	21 X 21	13 X 25	70	450	110	670	330	330	220	70 - 95	5

NOTE:-

1).CUSTOMIZED DIMENSIONS AVAILABLE ON REQUEST.